
GuitarPCB presents

Southern Fried

NostalgiTone **Southern Fried** is the first in my “Genre Series” to deliver the ultimate sonic experience, crafted to capture the tones of Lynyrd Skynyrd, the Allman Brothers, Molly Hatchet, Little Feat, Black Crowes, and more.

Compressor: The Compressor is a versatile tool, offering both subtle tone smoothing and heavy compression. The Volume adjusts the overall output, allowing for unity gain or a boost. The Sustain knob controls the compression level, ranging from light compression for tap solos & arpeggios to satisfying squash, perfect for country, blues, and Southern Fried rock. The Attack switch (SW1) fine-tunes the compression’s response to match your playing style.

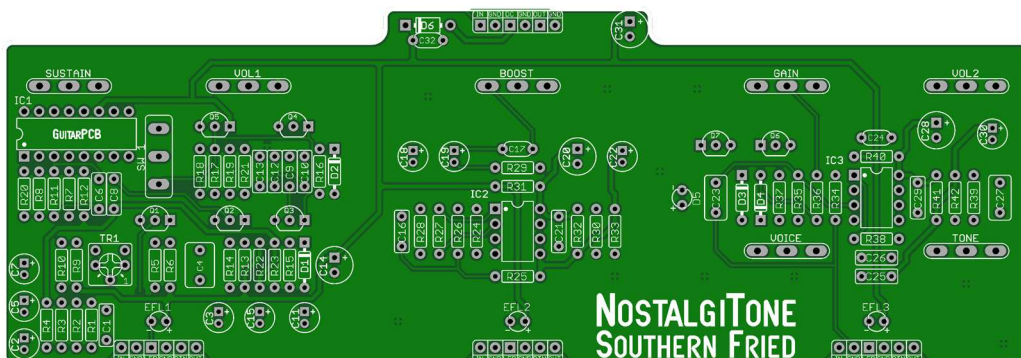
Boost: The Boost circuit provides up to +26dB of gain with a single control. It is ideal for enhancing lead work, balancing guitars with different outputs (like humbuckers and single-coils), or at lower settings using it as a buffer feeding the Dumbletone preamp, the Boost adds additional gain or saturation, offering even more tonal options.

Dumbletone: The Dumbletone preamp section is the heart of the Triple Combo. To achieve authentic Southern Fried tones, you need a preamp that is clear, transparent, and punchy, and nothing does this better than the Dumbletone. With four knobs to control Volume, Gain, Tone, and Voicing, it offers light overdrive at lower settings reminiscent of tube amps at the "sweet spot." Higher settings boost gain and sustain for rich overdrive. Pair it with the Boost or Compressor for soaring lead tones that cut through the mix.

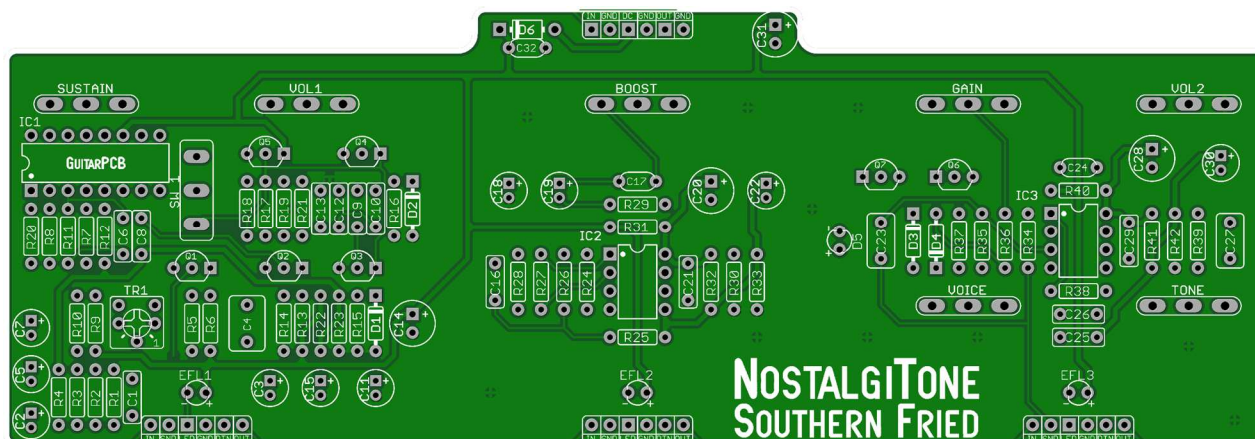
🔧 **Easy Wiring:** No more daunting wiring hassles! Say hello to beauty under the hood. Enjoy all-analog tones with modern features that will slip into your gig bag, ensuring you are always ready to unleash your musical magic.

🔧 **Available Components:** We recognize the hurdles of component availability. Rest assured, we've carefully selected components for the **NostalgiaTone** series that are currently available from today’s popular vendors.

Do not settle for the ordinary when you can have extraordinary. Elevate your tone with the **NostalgiaTone** series combo builds from GuitarPCB. Get yours today and discover a world of sonic possibilities like never before!



Part	Value	Part	Value	Part	Value	Part	Value	Part	Value
R1	1M	R21	10k	R41	10k	C18	4u7	Q1 - Q5	2N5088
R2	10k	R22	56k	R42	10k	C19	10uF	Q6 - Q7	2N7000
R3	470k	R23	27k			C20	100uF		
R4	470k	R24	10M	C1	10n	C21	100n	VOL1	A100K
R5	10k	R25	10M	C2	1uF	C22	1uF	SUSTAIN	C500K
R6	10k	R26	1k	C3	1uF	C23	470n	SW1	SPDT On/Off/On
R7	1M	R27	56k	C4	1uF	C24	100pF	BOOST	C500K
R8	1M	R28	2k7	C5	1uF	C25	100n	VOL2	A100K
R9	220k	R29	470R	C6	10n	C26	3n3	GAIN	B500K
R10	220k	R30	10k	C7	1uF	C27	470n	TONE	B50K
R11	15k	R31	47R	C8	1n	C28	100uF	VOICE	B10K
R12	150k	R32	100k	C9	10n	C29	100n	TR1	2K
R13	10k	R33	100k	C10	10n	C30	47uF		
R14	10k	R34	2M2	C11	10uF	C31	220uF	D1 - D4	1N4148
R15	1M	R35	470k	C12	22n	C32	100n	D5	Red LED
R16	1M	R36	1k	C13	2n2			D6	1N5817
R17	150k	R37	1k	C14	100uF	IC1	LM13700		
R18	39k	R38	10k	C15	1uF	IC2	TL072	* CLR x 3	1k8 - 4k7
R19	10k	R39	1k	C16	100n	IC3	TL072	EF1 - 3	6PIN Ribbon
R20	27k	R40	47R	C17	47pF			EFL1 - 3	Status LED



Build Notes:

Included with the purchase of the main PCB board will be (3) standard foot switch wiring boards (6 pins), as well as (3) pieces of ribbon connector. This simplifies the wiring process while keeping troubleshooting to a minimum.

*** CLR x3** - Each wiring board requires an onboard (CLR) current limiting resistor. This is for the main board status LEDs. A value of 1k8 (Bright) to 4k7 (Dim) may be used.

Solder the wiring boards (correct side) to your preferred 3PDT footswitch, attach one end of the ribbon cable to the wiring board, and then proceed to solder the three assembled footswitches to the main board. Utilize the top center pads for connecting power and the In/Out jacks.

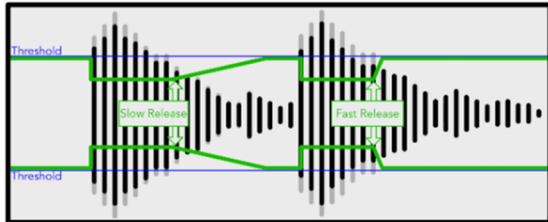
TIPS:

- **TR1** - Set the trim pot, TR1, to the mid position – you can be accurate by measuring the resistance between lugs 1 and 2 and between lugs 2 and 3, both values should be the same.
- **D1 – D2** are 1N914 Diodes used in the Compressor. These have a different forward voltage than the 1N4148.
- **D3 – D4** are 1N4148 Diodes used in the Dumbletone preamp including **D5** a Red LED for asymmetrical clipping tube amp tone.
- Avoid changing the values of resistors, capacitors, or potentiometer tapers, as they play a crucial role in both the functionality and the creation of the desired feel. All values are readily available.

Compressor Attack explained:

The speed at which Q5 turns on depends on how fast C11 changes from a discharged to a charged state; this is controlled by the resistance value of R17-R19, smaller resistance - faster capacitor charging - quicker turn-on time for Q5.

- SW1 UP: 10k (150k shorted). This is the fastest release time.
- SW1 MIDDLE: 10k + 150k in series which is the longest release.
- SW1 DOWN: 10k + 39k (which is in parallel to the 150k) is medium attack.



While it does not affect the overall tone a fast attack setting will reduce the volume of the initial pick strike, and depending on the amount of sustain, this can sound dramatic. For a more natural, transparent effect, a slower attack time will let the initial pick or finger attack through.

Usage Guide:

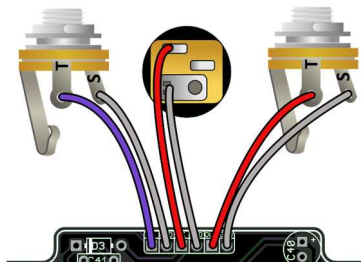
Gain Mapping: Effective gain mapping is vital for optimizing your combo pedal setup. Avoid the inclination to turn all knobs to 10, as this rapidly leads to unwanted noise and feedback. Instead, explore the intricacies of control mapping to unlock a diverse range of tones. Consider that each of the three circuits contributes a substantial level of Gain, and when used together, they combine.

1. **Compressor:** The Compressor is a versatile tool that offers both subtle tone smoothing and heavy compression. Start by adjusting the Volume for a mild boost. Set the Sustain knob to noon for a transparent sustain, or turn it up fully for a Southern Fried squash. This modified circuit provides an even tone that is not overly bass-heavy, ensuring your sound cuts through the mix. Adjust the attack switch to match your picking style for optimal feel. For a more obvious compression effect, set the SW1 switch up or down; for more transparent compression, set it in the middle.
2. **Boost:** While a solo boost is obvious, using the Boost at slightly lower settings as a buffer for the Dumbletone preamp may not be as readily apparent. Its flat frequency response preserves your tone while adding extra sparkle, making it perfect for this scenario.
3. **Dumbletone:** Start with all four knobs set to noon. You have complete control over Volume, Gain, Tone, and Voicing.
4. **Power Supply:** Always use a 9-volt power supply (nothing higher) with a 2.1mm plug and a negative tip.



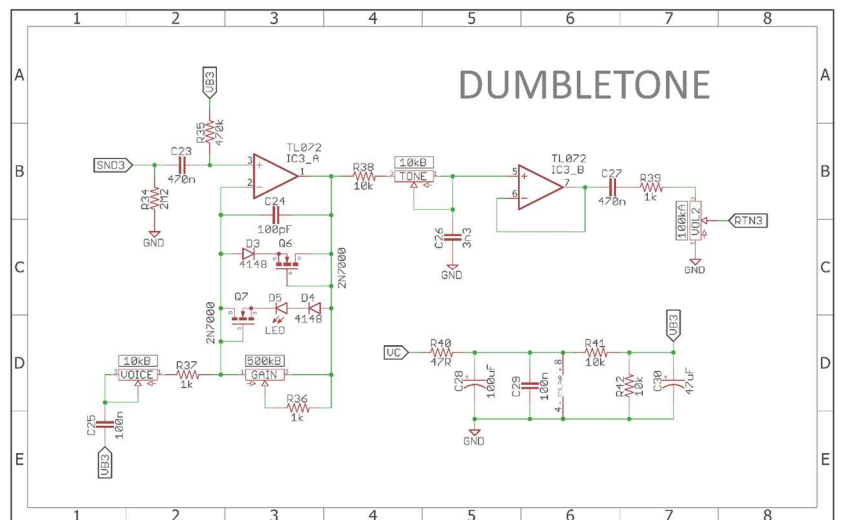
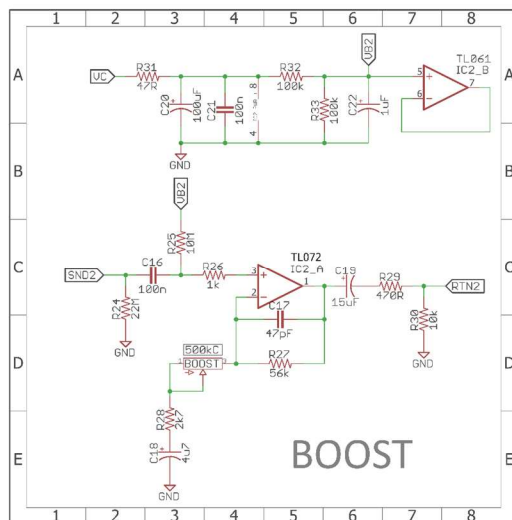
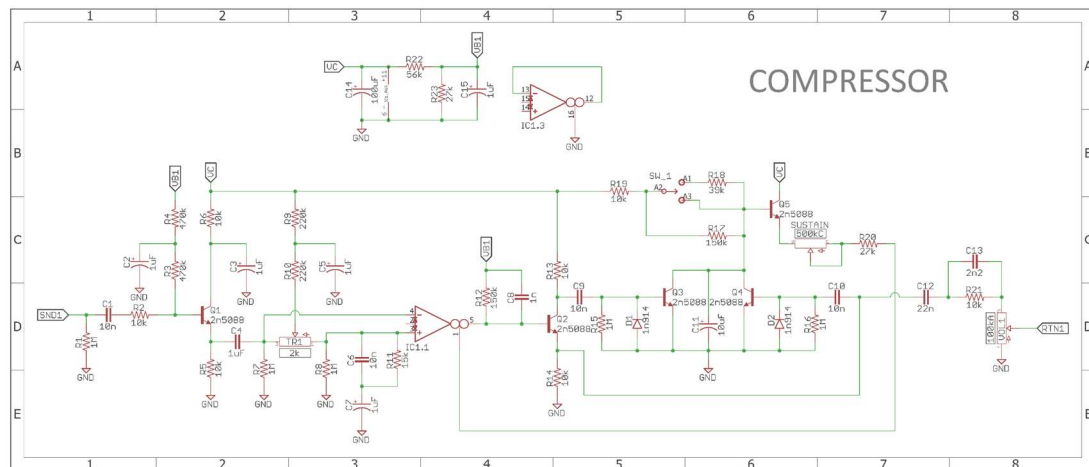
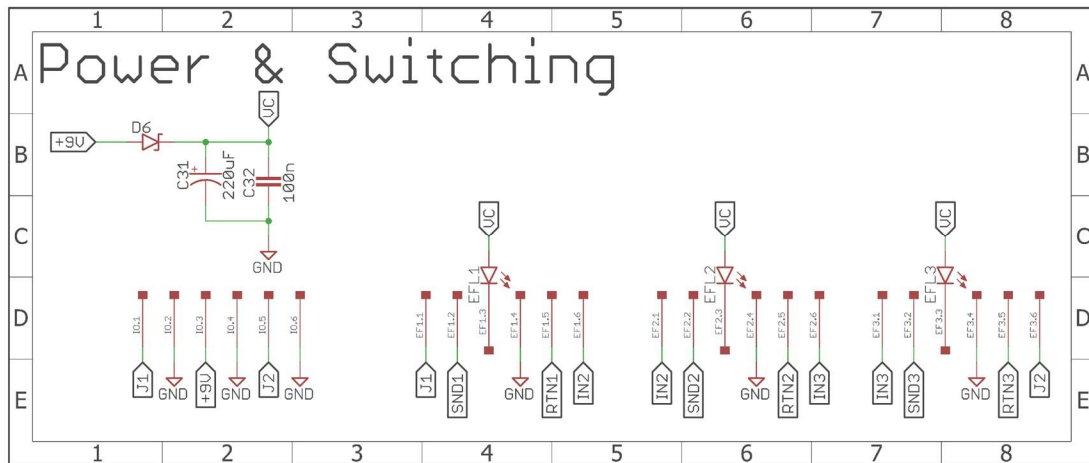
This Build Document, PCB, Artwork and Schematic image are property of ©GuitarPCB.com
All copyrights, trademarks and artworks remain the property of their owners.
Any company or product names used are for identification and educational purposes only.
GuitarPCB is in no way affiliated with any said companies and are not to be misrepresented.

A link for a Tayda Pre-drilled enclosure is on the Shop page at GuitarPCB.com

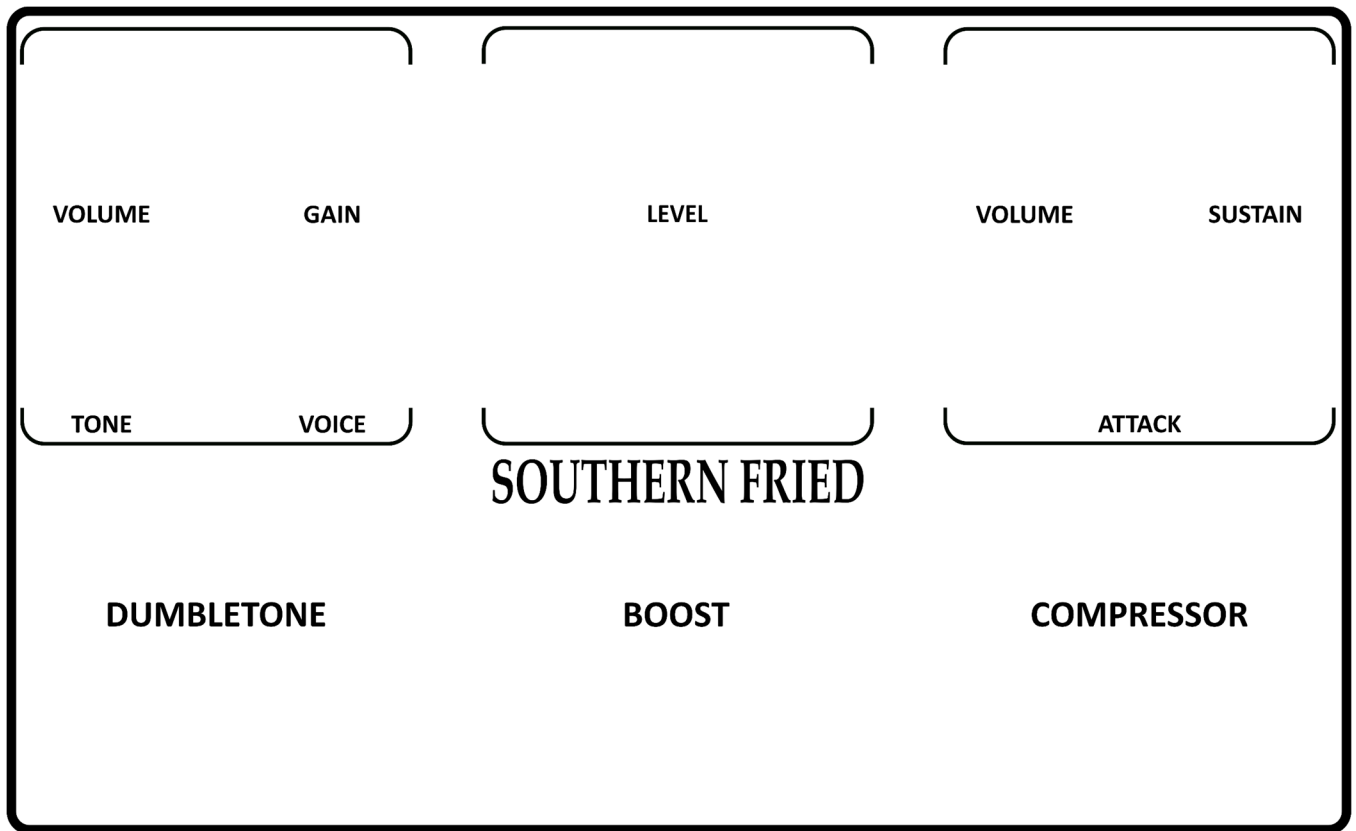


Easy Wiring Guide

Schematics:



Silkscreen Image: Obtain a High-Resolution version at the Shop Page where you purchased this PCB.



Drill Template Printing Tip:

The drill template is designed to scale and may extend into the page margins. For best results, set your PDF viewer or printer settings to "Actual Size" or "100%" (not "Fit to Page") before printing. If needed, adjust your printer's margin settings or use "Borderless" printing to ensure accurate sizing.

